



These easy tools will empower you to accurately mix any color!

PALETTE SET UP

Here are the colors I use and the way I arrange them on my palette. The pre-mixed colors are a game changer!



Colors On My Palette

1. Titanium White
2. Cadmium Lemon
3. Cadmium Orange
4. Naphthol Red
5. Permanent Alizarin Crimson
6. Yellow Ochre
7. Burnt Sienna
8. Viridian Green
9. Cerulean Blue
10. Ultramarine Blue
11. Prussian Blue
12. Mars Black

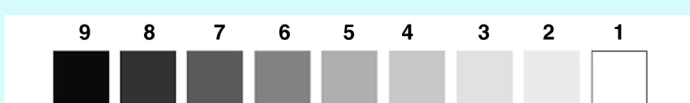
Pre-Mixed Colors Mixing Key



13. Base Shadow Mixture: Cadmium Orange and Ultramarine Blue mixed to a greenish brown
14. Grey: Titanium White and very small amount of Mars Black mixed to a mid-tone grey
15. Blue Mixture: Titanium White and a medium amount of Ultramarine Blue
16. Pink: Titanium White and a bit of Naphthol Red
17. Base "Flesh" Color: Titanium White, Cadmium Orange and bit of "Blue Mixture" (#15)

HERE IS WHAT YOU NEED TO KNOW

There are three terms that you can use to assess color: value, hue and saturation. The fourth distinction, temperature, is also extremely important to understand.



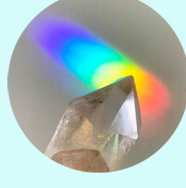
Value

Value relates to the lightness or darkness of a color. Value can be thought of on a scale ranging between 1 (white) and 9 (black). Many artists consider value to be the most important element to mixing color.



Hue

Hue can be defined as the purest expression of a color, like red, blue, or green, irrespective of its brightness or saturation. Imagine a prism or a rainbow, and you'll see the various hues of a



Saturation

Saturation relates to the intensity or vibrancy of a color. For example, brown is like a de-saturated orange. Flesh tone is also a de-saturated form of orange.



Temperature

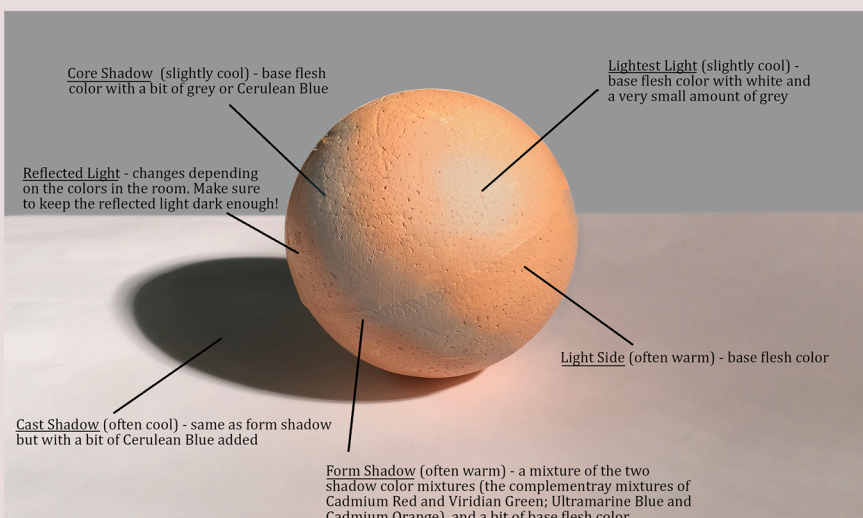
Color temperature refers to how warm or cool a color appears. Warm colors are like fire, such as red, orange, and yellow. Cool colors are like ice, like blue, green, and purple. This lesson will help you understand the difference between warm and cool colors.



Caucasian Flesh-Colored Sphere

It's important to understand how light and shadow work on a simplified object before moving to something more complicated like a face.

You can accurately mix any color by assessing its hue, value and saturation then fine-tuning with temperature.



** The lighting can change depending the color of your light source and the ambient light in the room. Always look closely and perceive for yourself. The colors can be mixed in numerous ways, this is just a suggestion of one way to mix them**

Black Flesh-Colored Sphere

In the Color Mixing Mini-Course I'll teach you how to use the four components of color to understand and create that color.



** The lighting can change depending the color of your light source and the ambient light in the room. Always look closely and perceive for yourself. The colors can be mixed in numerous ways, this is just a suggestion of one way to mix them**

Color mixing is a fascinating and essential skill for any artist or designer.

When mixing colors, carefully assess the hue, value, and saturation of the colors you are mixing.

As you fine-tune your color, pay attention to the temperature relationships between colors. This means considering the warmth or coolness of the colors and how they interact with each other.



One of the great things about color mixing is that there are lots of ways to mix what looks like the same color.

Check out the this [YouTube video](#) to see these color mixing principles in action and subscribe to my Youtube so you never miss a video!

I hope these tips were helpful! If you want to learn more about these color mixing principles check out my Color Mixing Mini-Class!

\$23 USD

Learn About the Color Mixing mini-class